



Event Spaces

EPICURE

MEMORABLE CULINARY EXPERIENCES



Contents

About Epicure 4 - 5

Taronga Zoo 6 - 7

Melbourne Town Hall..... 8 - 9

Zinc at Federation Square 10 -11

Melbourne Cricket Ground 12 -13

Brisbane City Hall 14 -15

Adelaide Town Hall 16 -17

State Library of South Australia 18 -19

The Ellington 20 - 21

South Australian Museum 22 - 23

Perth Zoo 24 - 25

Perth Convention & Exhibition Centre 26 - 27



About Epicure

At EPICURE, we are passionate about creating culinary memories to last a lifetime. Our fresh menus are created to leave lasting impressions.

With decades of experience crafting our passion for food, we rank as the elite catering company across Australia. Taronga Zoo is one of our newest flagship venues in Sydney – we have 11 iconic venues across Australia. Our speciality is tailoring our menus and services to individual events – fine tuning every last detail to ensure a unique event that suits your personal style. From gala events to weddings, corporate meetings to intimate social gatherings, we get excited about delivering a personal experience.

Our fantastic, energised team is made up of award-winning culinary chefs — with a passion for local flavour and market-fresh seasonal produce — attentive sales staff, expert event managers and friendly professional service teams to ensure every element is carefully tended to. Our chefs combine deliciously different food with a creative style. They draw inspiration from food trends around the world and bring this to all of their dishes.



Over 29 years

We've been creating experiences with loyal customers for over 29 years.



Amazing food and award winning team

Our award winning talented team creates amazing food that guests rave about. Please view our current seasonal menus at www.epicure.com.au



Iconic venues

Our iconic venues create the perfect atmosphere to make lasting memories for your guests passing through their doors.



Bespoke event

We'll work side-by-side with you to develop a customised menu and memorable event experience that runs effortlessly down to the last detail.



Small to large

Our unique venues cater to ceremonies and receptions big and small for up to 2,000 guests.

Taronga Zoo

Overlooking the Sydney Skyline

Taronga Zoo is a superb Sydney event venue. Only minutes from Circular Quay, this wonderful location provides guests with a range of breathtaking views and unrivalled experiences. Planning your event could not be any more exciting than at this destination setting. There are two dedicated function spaces, featuring floor-to-ceiling windows, natural light and premium conferencing facilities. This is complimented by several exclusive event locations, including the View Restaurant, Tiger Trek, Concert Lawns and even the impressive Taronga Institute Lawns surrounded by native animals.

The Wildlife Retreat, Sydney's newest accommodation offering, provides guests with an unforgettable overnight experience staying alongside our furry and feathered native friends. Opening at the end of 2019, it is the most hotly anticipated accommodation and is booking out quickly.

- ★ Unique and iconic Sydney location with incredible harbour views
- ★ Animals and wildlife around every corner
- ★ Unforgettable experiences to incorporate into your event
- ★ Brand new, state-of-the-art accommodation nestled in a native sanctuary
- ★ Wide array of versatile venues suitable for different event needs

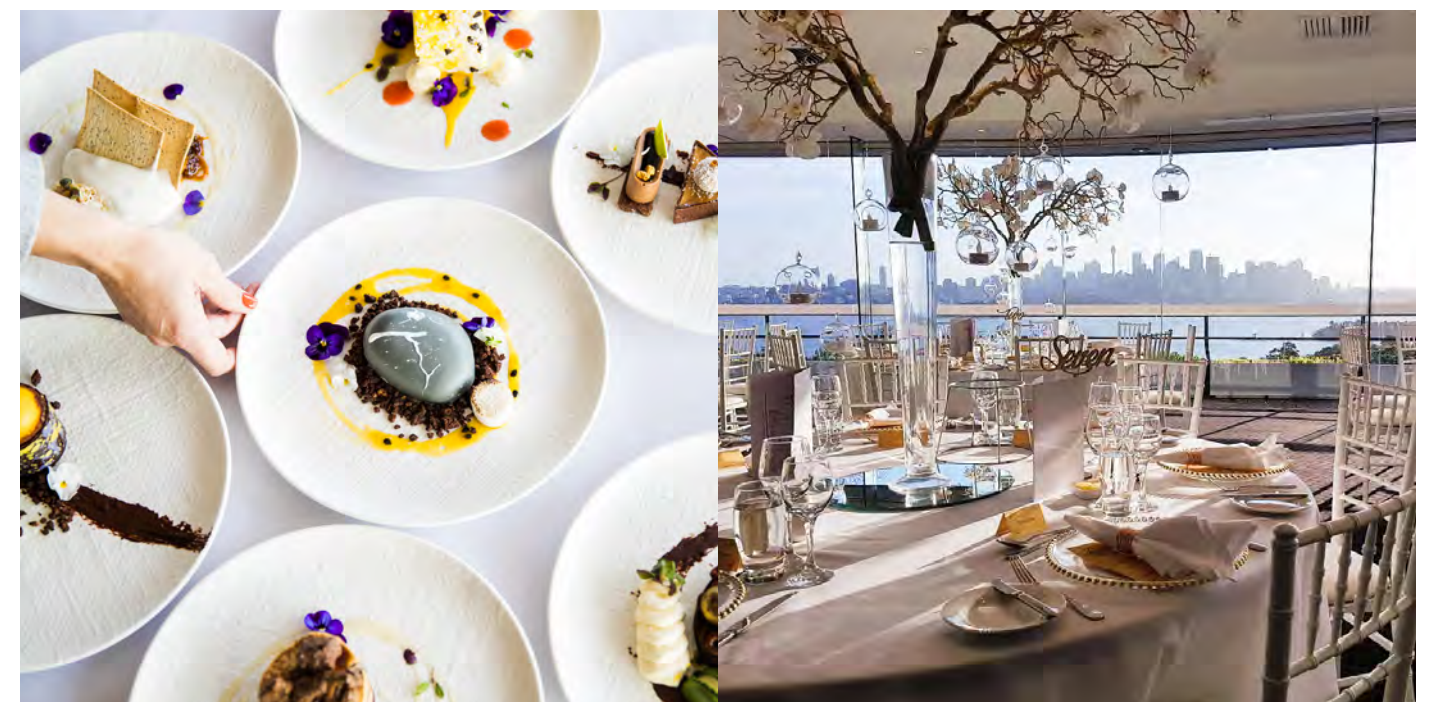


Capacity: 15 to 2,000
Address: Bradley's Head Road
 Mosman NSW 2088
Phone: +61 2 9969 2400



"Just wanted to say a massive thank you for the event you put on for us yesterday – all the team were so incredibly pleased with it all and raved about the food!! A big shout out to the supervisor to was a pleasure to work with on the day and all the help from the coordinators from the start."

Kerryn - Boehringer Ingelheim



Melbourne Town Hall

Historical Splendour

From the moment you walk up the red-carpet staircase, you will be awed by the history of the Melbourne Town Hall. Whether you stand on the Portico Balcony where the Beatles once waved, or view the richly carved Grand Organ that houses more than 10,000 pipes, you will marvel at the greatness of the Town Hall.

Located centrally in the CBD, the seven different spaces, accommodating up to 2,000 guests, bring a timeless sophistication to your event. Being greeted by the resident doorman in his top hat and regular visits from the Lord Mayor all add to the theatre of this magnificent venue.

- ★ Central Melbourne location, with unparalleled commuting links
- ★ A range of unique spaces catering for 20 to 2,000 guests
- ★ A venue steeped in history and grandeur
- ★ The Main Hall is a breathtaking space showcasing the Grand Organ, the largest in the southern hemisphere
- ★ A range of seasonal and contemporary menus tailored to suit each event



Capacity: 20 to 2,000
Address: Corner Swanston & Collins Sts
Melbourne VIC 3000
Phone: +613 9229 6377



"As an Event Manager, I have no hesitation in recommending EPICURE for events small or large—The Melbourne Mining Club always considers Epicure our 'partner in success'."

Jenny - Melbourne Mining Club
(a regular customer since 2001)





Overlooking Yarra River

Located in the heart of Melbourne's CBD, ZINC's floor-to-ceiling windows showcase views of the Yarra River and city skyline. Boasting an abundance of natural light, two large outdoor decks to enjoy the spectacular views, and a versatile space that can be split for more intimate settings, ZINC provides a modern and contemporary venue that adds elegance and sophistication to any event.

We have a broad range of enticing menus to suit all events; but we also love coming up with bespoke packages if you have something unique in mind. The space is flexible, and dividable into two separate studios and a discrete room for breakout sessions or catering breaks at your conference or meeting. We also work closely with Federation Square and the Deakin Edge auditorium to extend the space for large functions.

- ★ Central Melbourne location with excellent parking nearby
- ★ Stunning views of the Yarra River and the city with a picturesque outdoor deck
- ★ Flexible space and the ability to hold up to 520 guests for a conference
- ★ Bright, modern venue with floor-to-ceiling windows and natural light
- ★ A team of event experts located on site to deliver your perfect event



Capacity: Up to 1,000
Address: Corner Swanston & Flinders Sts
 Melbourne VIC 3000
Phone: +61 3 9229 6300



"I wanted to put in writing what a wonderful night we all had. Thank you all so much! The food, service & quality of everything was brilliant. Everyone was very happy with the location, the signage out the front garnered a few 'ooh!' comments, and the room itself was spot on for the style of our event."

Kathy - Becca



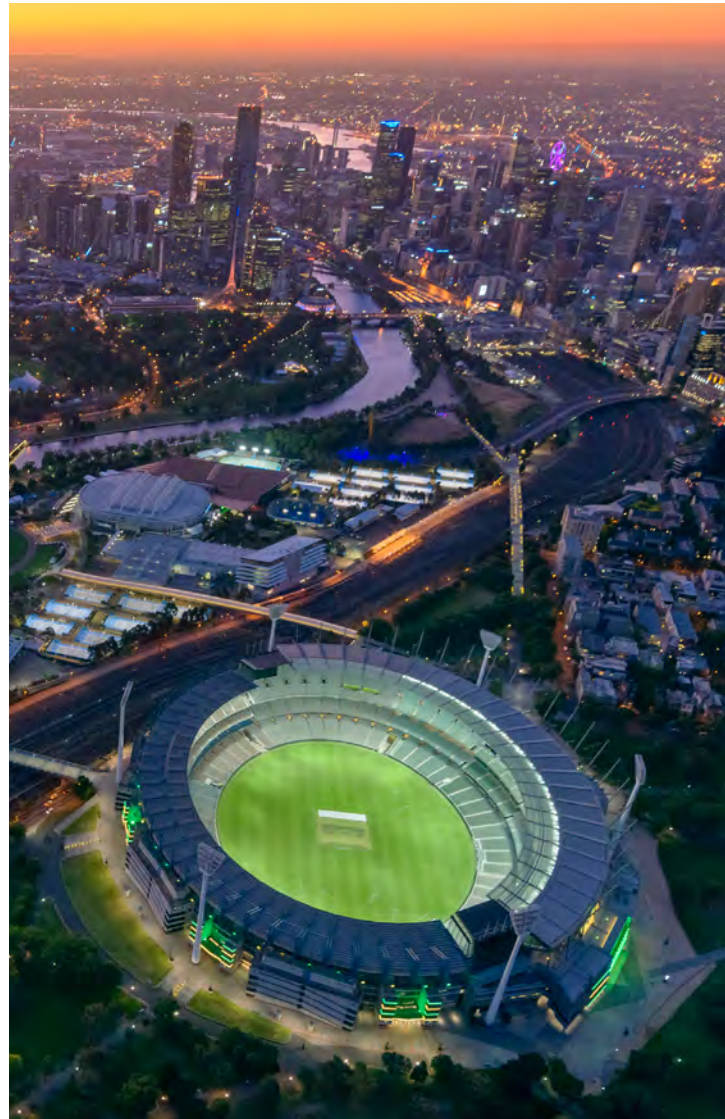
Melbourne Cricket Ground

The Heart of Melbourne

Surrounded by beautiful parklands, the Melbourne Cricket Ground (MCG) is so much more than Australia's biggest sporting stadium; for over 150 years it has been affectionately known as Melbourne's heartbeat – it is the people's ground. The MCG and its hallowed turf epitomises the importance of Australian sport. With privileged inner sanctum access, guests can enjoy a total package or select a single element of interest.

Situated only minutes from the CBD, with an extraordinary array of 28 first-class function spaces, the MCG can cater for any type of event. Boasting one of the largest kitchens in Melbourne, the renowned Epicure chefs are rated some of the best in the industry and have served football fans through to royalty.

- ★ Unique venue, the most iconic location in Melbourne
- ★ Versatile function rooms with natural light and views of the hallowed turf
- ★ A range of value-add experiences can be added to the event
- ★ On-site AV ensures seamless event delivery and the ability to use the MCG scoreboard, creating a "wow" factor
- ★ Award-winning culinary chefs to create the perfect menu, every time



Capacity: 20 -1,000
Address: Brunton Avenue
Richmond VIC 3002
Phone: +61 3 9248 2340



"It was truly wonderful working with you and the whole Epicure conference team. Nothing was a problem from start to finish and for a PCO who works with a lot of venues, you truly did an amazing job and made my job easier. I WAS VERY IMPRESSED and so were my clients, sponsors and delegates!"

Lee-Anne - Happening Australia



Brisbane City Hall



Stunning Heritage Venue

Brisbane City Hall reopened in April 2013 after a three-year renovation. Located in the heart of the city, this stunning, heritage venue is considered one of Brisbane's finest buildings. As you enter the magnificent King George Square foyer, the grandness of the marble staircases and the vaulted ceilings, chandeliers, and mosaic-tiled floors are sure to impress your guests.

The venue boasts nine different and beautifully decorated spaces. The on-site team can help to facilitate every type of event, with the celebrated chefs creating delicious dishes for every occasion.

Adjoining City Hall is King George Square - an open air public gathering space, which can also be used as a fabulous outdoor setting, providing an exclusive experience for your guests or a perfect location for a community event.

- ★ One of the most iconic buildings in Brisbane
- ★ Access to King George Square as a unique outdoor location to hold events
- ★ A number of beautifully renovated function rooms
- ★ Dedicated events team to ensure your event runs seamlessly
- ★ Exquisite menus focused on seasonal Queensland produce



Capacity: 10 - 2,000
Address: 64 Adelaide Street
Brisbane QLD 4000
Phone: +61 7 3014 4705



"Epicure was a pleasure to work with, answering any questions, queries and requests straight away. The team worked with us to execute our activation and catered to last minute changes without any stress or concern. The Epicure team joined in on our activation and helped make everybody involved feel happy, comfortable & safe."

Lana Krainoff - Halo Top Australia Pty Ltd



Adelaide Town Hall

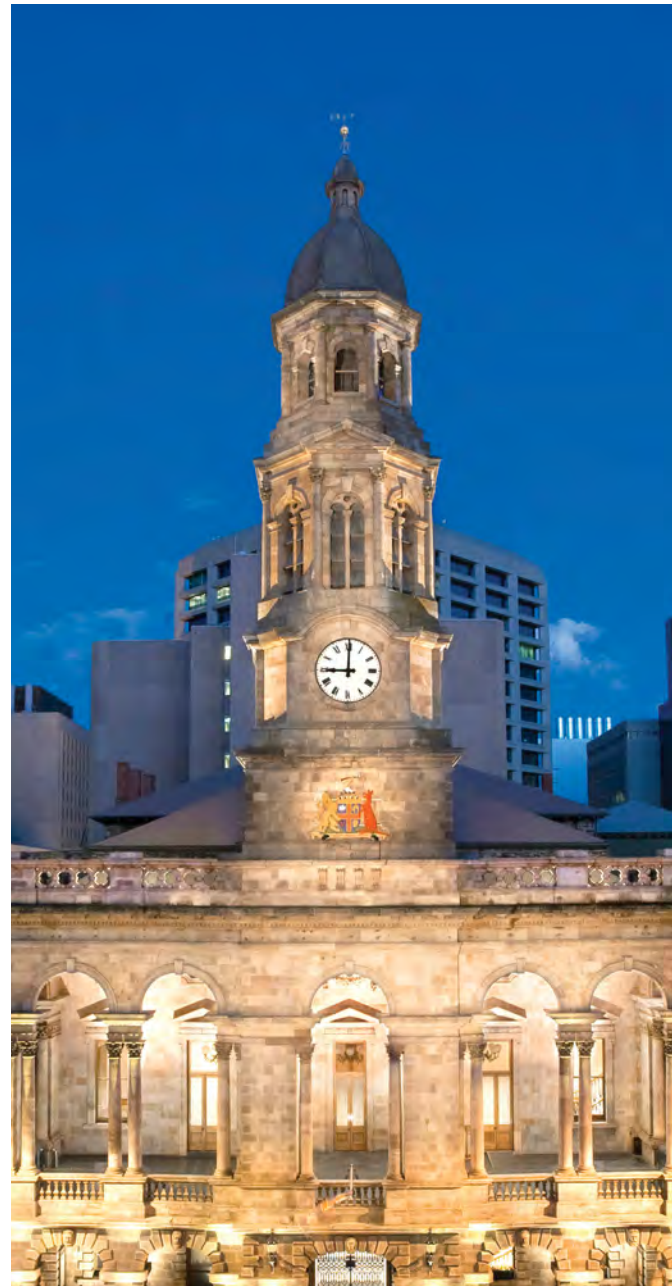
Picturesque Backdrop

The Town Hall is not only a building of extreme grandeur and heritage, but also a significant icon in the history of the city. Built in 1866, the architecturally designed freestone building boasts the Albert Tower bells and the impressive pipe organ. With eight unique spaces, from the newly refurbished historic auditorium, which can facilitate 1110 guests in a theatre style, to the stunning balcony that's perfect for pre-dinner cocktails, we can cater for all events.

- ★ A striking venue with Victorian heritage and a regal clock tower
- ★ Situated in the centre of the city, on King William street
- ★ Soaring ceilings and a grand organ in the magnificent auditorium
- ★ Eight function spaces with state-of-the-art audio visual
- ★ South Australian wines and delicious seasonal menus using local ingredients



Capacity: 10 - 2,000
Address: 128 King William Street
Adelaide SA 5000
Phone: +61 8 8203 7962



"It was a wonderful night: the food was outstanding, the service provision likewise, and the setting superb. Your own organisation and attention to detail was highly effective and efficient, and certainly gave us every confidence that the evening would run well. Many thanks once more for all your support and excellent service!"

Pam & Ian – 50th wedding anniversary



State Library of South Australia

Premier Heritage Venue

The State Library of South Australia is at the heart of Adelaide's cultural precinct. Step into a treasure trove of fine art, spectacular architectural spaces and the rich atmosphere of one of the best heritage collections in Australia. With the stunning new Spence Wing nestled between the famous classical façades, the State Library of South Australia presents an outstanding array of hospitality spaces — historical and contemporary — perfect for all kinds of events.

- ★ An impressive building in the French Renaissance style, with a glass-domed roof allowing the chamber to be lit with natural light
- ★ Dine in historical architectural spaces creating a truly memorable experience
- ★ Exclusive access to exhibitions displaying the rich heritage of South Australia
- ★ A dedicated event expert to help bring your function or wedding to life
- ★ An expert team of chefs to produce an exquisite menu, paired with South Australian wines



Capacity: 10 - 300
Address: North Terrace
 Adelaide SA 5000
Phone: +61 8 8207 7373



"Everyone had a wonderful time. EPICURE staff were wonderful, and many of my guests commented on their professionalism. All the food was excellent and many comments on that too."

Bev - private event



The Ellington



Art Deco Glamour

This beautiful Art Deco building offers the elegance, extravagance and excitement of the 1920s in a newly-refurbished, contemporary setting. Situated opposite the Botanical Gardens next to the North Terrace precinct, The Ellington is a unique event space where you can celebrate in style. It features grand deco mirrors, a large sweeping dance floor and the option of panoptic 'starlight' ceiling for those celebrations that call for something special.

- ★ Newly renovated Art Deco venue with stunning spaces and modern feature lighting
- ★ One large central room with two complementing rooms
- ★ Event specialist to plan your event and tailor a delicious menu
- ★ The Ballroom offers banquets and dinners for 100 to 360 guests and cocktail receptions for up to 420
- ★ In-house audio visual, rigging points and capacity for a large dance floor



Capacity: 50 - 425
Address: 23 Hackney Road
 Hackney SA 5069
Phone: +61 8 8132 5999



"The service to the tables was excellent. Very efficient staff, who were helpful and obliging. The guests commented that the food was delicious and the right quantity."

Fiona - 50th birthday



South Australian Museum

Unique Cultural Experience

Imagine your special event at the world-acclaimed South Australian Museum. This unique and contemporary function venue in the North Terrace's leafy, cultural precinct is surrounded by historic buildings, lush gardens and lawns.

The Museum is one of the most visited cultural institutions in Australia and a short walk from city accommodation. Hosting events for 10 to 1500 people, South Australian Museum offers a range of fascinating and contrasting spaces. The elegant and modern Main Foyer is the ultimate location for photographs and pre-dinner drinks. Marvel at the history of the Pacific Cultures Gallery while enjoying a sumptuous meal. Finish with coffee in the mood-lit Mammals Gallery, under the watchful eye of the lion.

- ★ One of the most prestigious landmarks in Australia, located in the heart of Adelaide's cultural precinct
- ★ Limitless options to make ideas come to life with a flexible and transformative approach to events
- ★ Three outdoor venues offer a rare private garden setting right in the heart of the CBD
- ★ All money raised through venue hire supports the maintenance of collections
- ★ Stunning architecture, a perfect blend of state-of-the-art and historic galleries



Capacity: 10 - 1,000
Address: North Terrace
Adelaide SA 5000
Phone: +61 8 8207 7373



"Thanks very much for organising the event for IGA, the venue looked excellent, food and drinks were plentiful and your staff were amazing."

Timothy - IGA



Perth Zoo



Animating Event Location

Perth Zoo is undoubtedly one of Perth's most unique venues and is perfectly positioned for all your guests. Located just over the river but near to the city centre, this setting is the perfect back drop for any function or wedding. Walking through the lush grounds, your guests will be captivated by this unrivalled experience.

We offer a range of reception areas to complement any event, including both indoor and outdoor spaces, and can facilitate a sleek and modern event in our stunning garden marquee or a more rustic occasion in the Homestead barn.

Food is our passion, and our culinary experts ensure our menus reflect key food trends while our dedicated team will oversee your event, making sure it all goes to plan.

- ★ Perth's most unique event location
- ★ Close to Perth's CBD
- ★ A range of indoor and outdoor locations to suit your event
- ★ Culinary experts that tailor your menu to reflect the occasion
- ★ A range of exclusive experiences



Capacity: 40 - 300
Address: 20 Labouchere Road
 South Perth WA 6151
Phone: +61 8 9474 0444



"Thank you so much for looking after us so well. I have one of these events every year in different capital cities and my experience here was fantastic! The food was delicious. I will be using Perth Zoo whenever I have an event. So I thank you for making it successful for my event."

Pauline - Share and Care with MODERE



Perth Convention & Exhibition Centre

State-of-the-Art Conference Facilities

The Perth Convention and Exhibition Centre (PCEC) is Western Australia's only dedicated and purpose-built conference, exhibition, meeting, and event venue. An impressive building located in the heart of Perth, PCEC is the perfect location for your next event and the ideal launch pad for a holiday to the pristine coastline of WA or the renowned Margaret River Region.

Guests are welcomed into a 300-metre long, floor-to-ceiling glass foyer, and all three levels of PCEC feature expansive pre-function and foyer areas, providing panoramic city views. PCEC's capacity – combined with its functionality and versatility – are what set it apart from its competitors. Offering unrivalled versatility, the facilities of this state-of-the-art, three-level venue are unparalleled in WA.



- ★ Six multi-function exhibition pavilions spanning 16,644m²
- ★ The 2,500-seat tiered Riverside Theatre featuring advanced presentation capabilities
- ★ The BelleVue Ballroom seating 300 to 1,700 guests for banquets and offering views over Perth's picturesque Swan River
- ★ An additional 19 specialist meeting and boardrooms
- ★ A team of qualified chefs producing delicious dishes for every event, with a focus on locally produced ingredients and low food miles



Capacity: 30 - 5600
Address: 21 Mounts Bay Road
Perth WA 6000
Phone: +61 8 9338 0300



"Thank you Epicure team. It was a brilliant event with all those who attending having the best of times, I must say the food was magnificent and done so well. Your staff were more than attentive and everything went without a hitch. Again, a magnificent night. Please convey our thanks to all attending staff. Most impressed!"

Pippa - Preventative Injury Planning Strategies



GET IN TOUCH

Be inspired! See what is happening on our social channels

 /EPICURE.FINE.CATERING

 /THEEPICUREFOODIES

 /company/epicure

NEW SOUTH WALES

The Taronga Centre

QUEENSLAND

Brisbane City Hall

SOUTH AUSTRALIA

Adelaide Town Hall | South Australian Museum | State Library of South Australia | The Ellington

VICTORIA

Melbourne Cricket Ground | Melbourne Town Hall | ZINC at Federation Square

WESTERN AUSTRALIA

Perth Convention and Exhibition Centre | Perth Zoo

EPICURE

MEMORABLE CULINARY EXPERIENCES